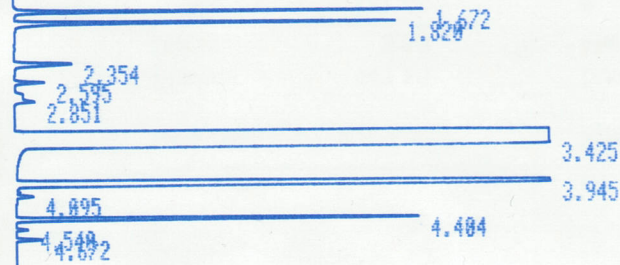


Dimethylacetthal to 2

* RUN # 3 JAN 1, 1901 00:33:32
START



STOP

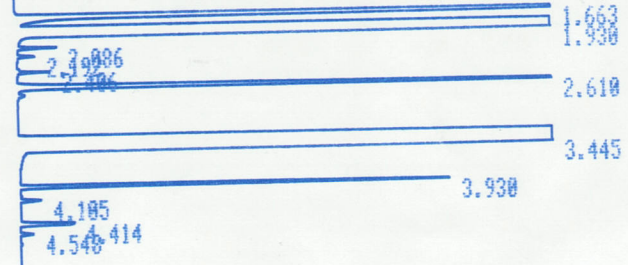
RUN# 3 JAN 1, 1901 00:33:32

RT	AREA	TYPE	WIDTH	AREA%
1.672	212063	PB	.018	.34522
1.820	255080	PB	.023	.41524
3.425	58074080	PB	.092	94.53856
3.945	2575205	PB	.033	4.19217
4.404	312574	PB	.027	.50884

TOTAL AREA=6.1429E+07
MUL FACTOR=1.0000E+00

Dimethylacetthal to 1

* RUN # 2 JAN 1, 1901 00:20:26
START



STOP

RUN# 2 JAN 1, 1901 00:20:26

RT	AREA	TYPE	WIDTH	AREA%
1.663	6814851	PB	.020	8.26107
1.930	11524960	BB	.071	13.97073
2.610	659232	PB	.035	.79913
3.445	63214432	PB	.094	76.62950
3.930	280113	PB	.022	.33956

TOTAL AREA=8.2494E+07
MUL FACTOR=1.0000E+00

